

# Newsletter

FOURTH QUARTER 2020



Read more about the following in this issue:

[Contribution increases effective 1 January 2021](#)

[Benefit changes for 2021](#)

[Plan changes for 2021](#)

[Holiday recipe – creamy curry prawns](#)

[Emergency information to keep at hand during the festive season](#)

[Important contact details](#)



## LETTER FROM THE PRINCIPAL OFFICER

The outbreak of the Covid-19 pandemic and resultant lockdown measures implemented by Government created extraordinary pressures on members and the Scheme. These measures resulted in financial pressure for many of our members and very different claims patterns in comparison with prior years.

While the Scheme had to deal with many uncertainties in planning the way forward, the Trustees prioritised the implementation of relief measures to assist our members financially. The Trustees postponed the increase in contributions that normally takes

place on 1 July every year to 1 January 2021, resulting in financial relief of approximately R12 million for our members.

The Trustees, Actuaries and Scheme Management recently reviewed the financial position of the Scheme and confirm that the postponed increase for the Imperial Motus Med Health Plan will be 3% and 2% on the Imperial Motus Med Budget Plan with effect from 1 January 2021. The new contribution tables are included in this newsletter. At the same time, as per the normal process, benefit limit increases will be simultaneously implemented with effect from 1 January 2021.

While the Covid-19 pandemic appears to have peaked during July and August 2020 in South Africa, there are still concerns that a second wave of infections may occur and the full impact of the economic fall-out and

effect on the Scheme is not known yet. The Trustees, Actuaries and Scheme Management will take all these factors into account and review the financial position of the Scheme during the first quarter of 2021 to determine if any further contribution increases will be required in the normal, annual contribution increase cycle on 1 July 2021.

We will soon enter a well-earned holiday season and travel all over the country to various holiday destinations. We urge you to limit your social contact and keep safe.

Travel with care and our best wishes for good health accompany you and your family in these extraordinary times.

Yours faithfully  
*Johan van der Walt*

Principal Officer  
Imperial Motus Med

# CONTRIBUTION TABLES

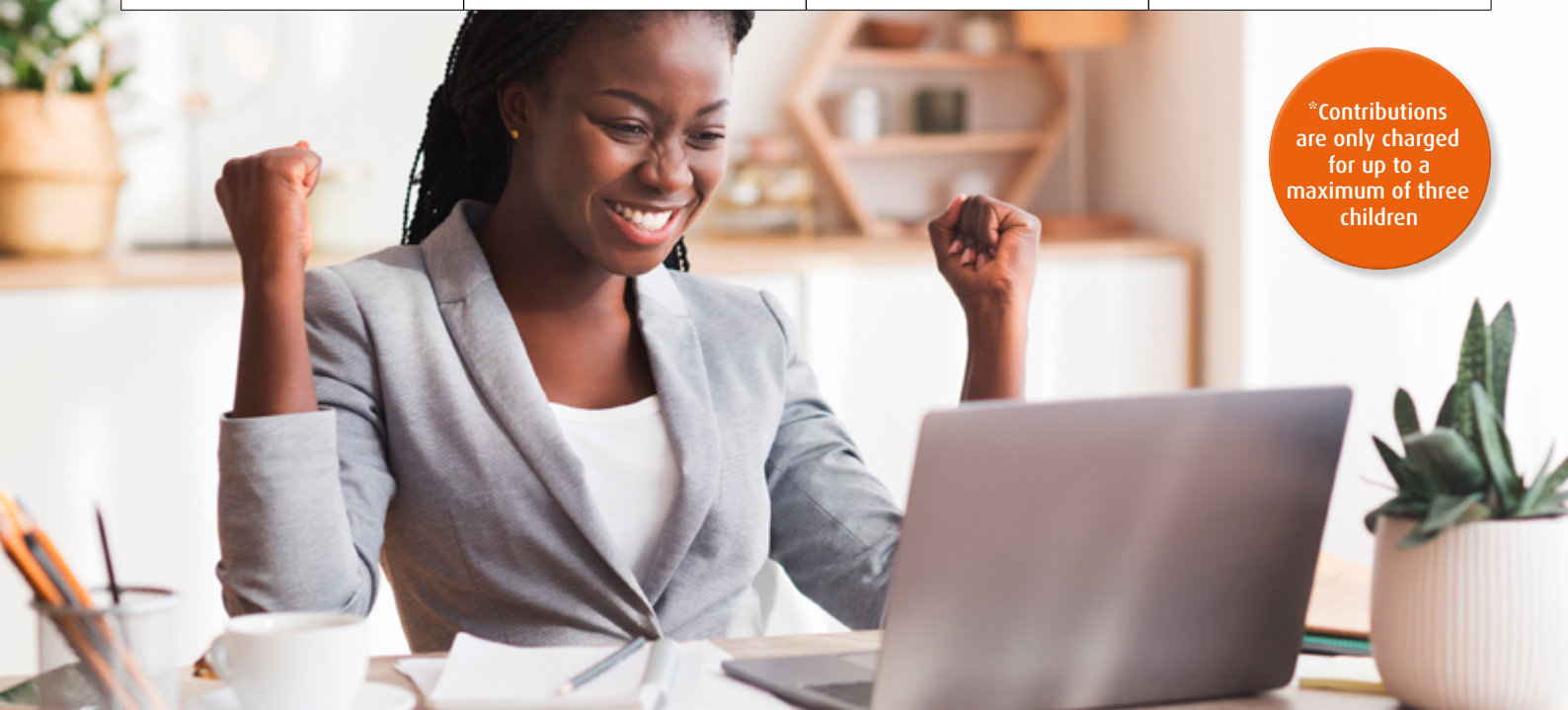
## EFFECTIVE 1 JANUARY 2021

Below are the Imperial Motus Med contribution tables effective 1 January 2021 for the Health and Budget Plans.

IMPERIAL MOTUS MED HEALTH PLAN – 3% INCREASE			
Income category	Principal member	Adult dependant	Per child (max 3*)
R0 – R3 500	R2 305	R1 842	R416
R3 501 – R5 240	R2 605	R2 085	R469
R5 241 – R6 970	R2 893	R2 315	R521
R6 971 – R7 930	R3 219	R2 578	R581
R7 931 – R9 510	R3 251	R2 604	R586
R9 511 – R11 090	R3 284	R2 628	R592
R11 091 – R12 680	R3 311	R2 653	R599
R12 681 – R14 290	R3 346	R2 678	R605
R14 291+	R3 380	R2 707	R610

IMPERIAL MOTUS MED BUDGET PLAN – 2% INCREASE			
Income category	Principal member	Adult dependant	Per child (max 3*)
R0 – R12 680	R1 644	R1 318	R349
R12 681 – R14 290	R1 751	R1 401	R412
R14 291 – R15 880	R1 898	R1 517	R485
R15 881 – R17 460	R2 155	R1 724	R517
R17 461+	R3 060	R2 446	R552

\*Contributions are only charged for up to a maximum of three children





# HOLIDAY RECIPE

## Creamy curry prawns

### Ingredients

1 kg prawns, deveined, cleaned and defrosted  
3 x tablespoons butter  
250 ml Ina Paarman's creamy curry  
4 x bay leaves  
Half a teaspoon curry powder  
250 ml fresh cream  
500 g fresh pasta (linguini or fettuccini)  
Chopped spring onions

### Method

Melt butter and braai prawns in butter for three minutes.  
Add the curry powder, bay leaves, creamy curry and cream.  
Cook for five minutes till prawns are cooked.  
Serve with fresh pasta and chopped spring onions.

It's simple,  
but very  
tasty!



## EMERGENCY INFORMATION TO KEEP AT HAND DURING THE FESTIVE SEASON

In a medical emergency or when medical treatment is required, the first and most important thing to do is to stay calm and to contact the correct authorities to help you. Below are service providers you can contact in an emergency:

### 24-HOUR MEDICAL EMERGENCY SERVICES:

Europ Assistance emergency services

### 24-HOUR PERSONAL HEALTH ADVISOR LINE:

A service offered by Europ Assistance for 24-hour advice on medical-related concerns

0861 RESCUE (0861 737 283) 

## IMPORTANT CONTACT DETAILS

For administration queries, you may call the following numbers during office hours from 08:00 to 16:30, from Monday to Friday. Alternatively, send us a letter or email or visit our website. In an emergency, call Europ Assistance at any time of the day, seven days a week.

### CLAIMS ENQUIRIES, MEMBERSHIP CONFIRMATIONS AND REGISTRATIONS

Tel: 0860 467 374 Fax: 0860 111 788  
Email: [enquiries@imperialmotusmed.co.za](mailto:enquiries@imperialmotusmed.co.za)

### MANAGED CARE SERVICES – HOSPITAL PRE-AUTHORISATION AND ONCOLOGY BENEFIT MANAGEMENT PROGRAMME

HOSPITAL PRE-AUTHORISATION  
Tel: 0860 467 374 Fax: 0861 888 113  
Email: [hrm@imperialmotusmed.co.za](mailto:hrm@imperialmotusmed.co.za)

ONCOLOGY  
Tel: 0860 467 374 Fax: 0861 222 552  
Email: [oncology@imperialmotusmed.co.za](mailto:oncology@imperialmotusmed.co.za)

CHRONIC MEDICATION AND MEDICAL MANAGEMENT  
Tel: 0860 467 374 Fax: 0860 111 788  
Email: [chronic@imperialmotusmed.co.za](mailto:chronic@imperialmotusmed.co.za)

EUROP ASSISTANCE EMERGENCY SERVICES  
Tel: 0861 RESCUE (0861 737 283)

MEMBER CARE LINE – MEDI CALL  
Toll free: 0860 105 221 Fax: 0866 889 411  
Email: [imperialmotusmed@medicall.co.za](mailto:imperialmotusmed@medicall.co.za)

HIV YOURLIFE PROGRAMME  
Tel: 0860 109 793 Fax: 012 675 3848  
Email: [hiv@momentum.co.za](mailto:hiv@momentum.co.za)

CONTRIBUTIONS  
Contact your company's payroll/human resources department

THE SCHEME'S WEBSITE  
[www.imperialmotusmed.co.za](http://www.imperialmotusmed.co.za)

MEMBER SUGGESTION EMAIL BOX  
Email: [suggestions@imperialmotusmed.co.za](mailto:suggestions@imperialmotusmed.co.za)

FRAUD HOTLINE  
Tel: 0800 000 436

COUNCIL FOR MEDICAL SCHEMES – COMPLAINTS  
Tel: 0861 123 267 Fax: 012 431 0608  
Email: [complaints@medicalschemes.com](mailto:complaints@medicalschemes.com)

DENTAL AUTHORISATION  
Tel: 0860 467 374  
Email: [dentalauth@momentum.co.za](mailto:dentalauth@momentum.co.za)

IMPERIAL MOTUS MED POSTAL ADDRESS  
PO Box 32759  
Braamfontein  
2017

